

Periferik Sinir

Doç. Dr. Bülent AYAS
Tıp Fakültesi
Histoloji-Embriyoloji AD.

Sinir sistemi

- Anatomik olarak iki kısımdan oluşur:
 - Merkezi sinir sistemi
 - Periferik sinir sistemi
 - Kranial, spinal ve periferik sinirler (motor ve duyu sinirleri)
 - Gangliyonlar

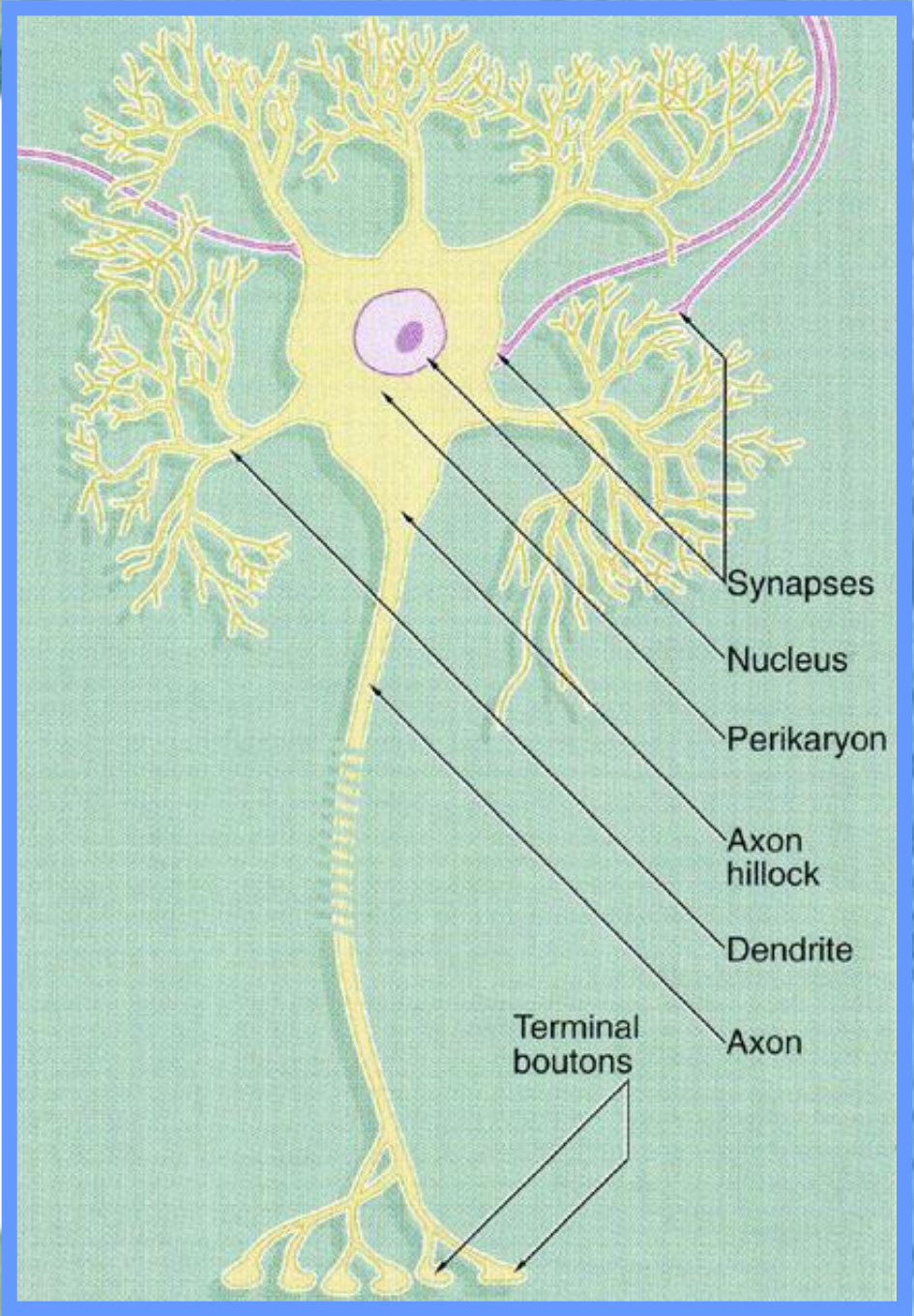
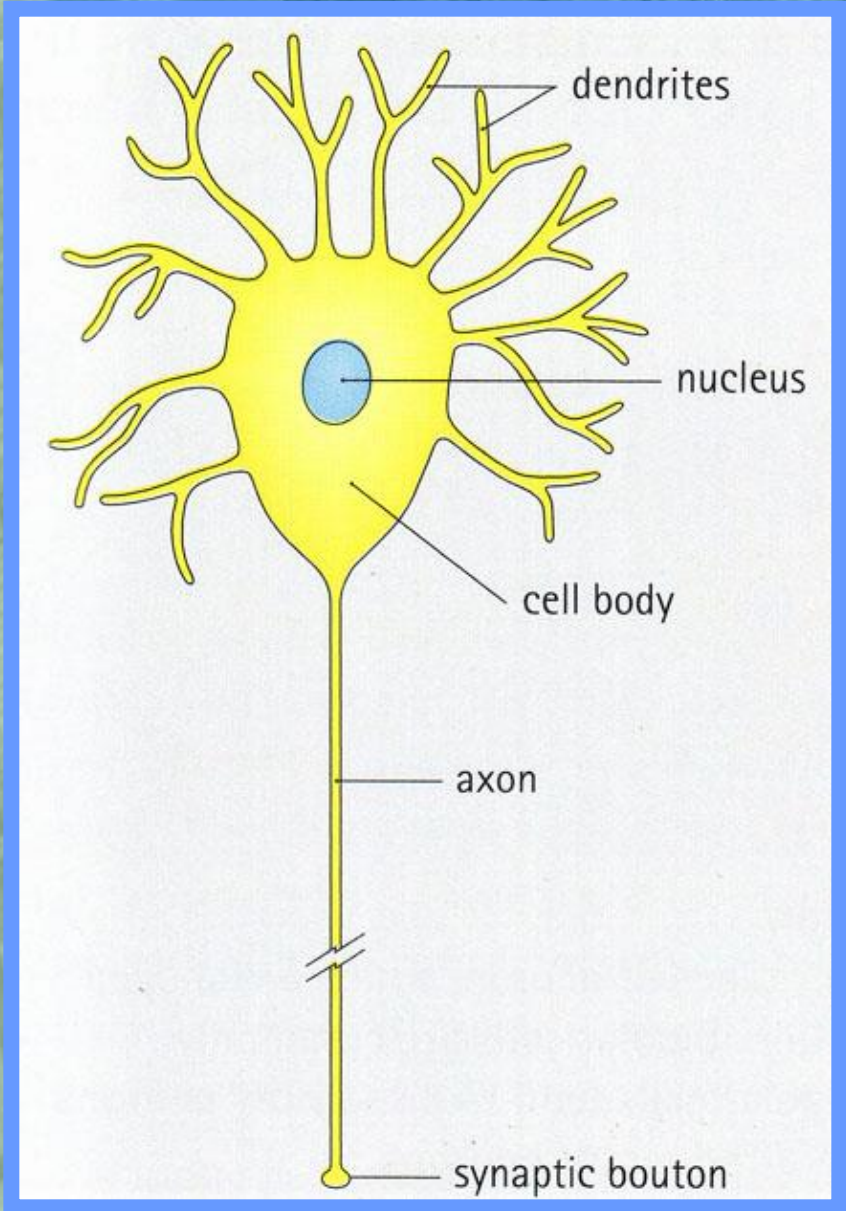
Nöron

- Üç kısımdan oluşur;

Dendrit

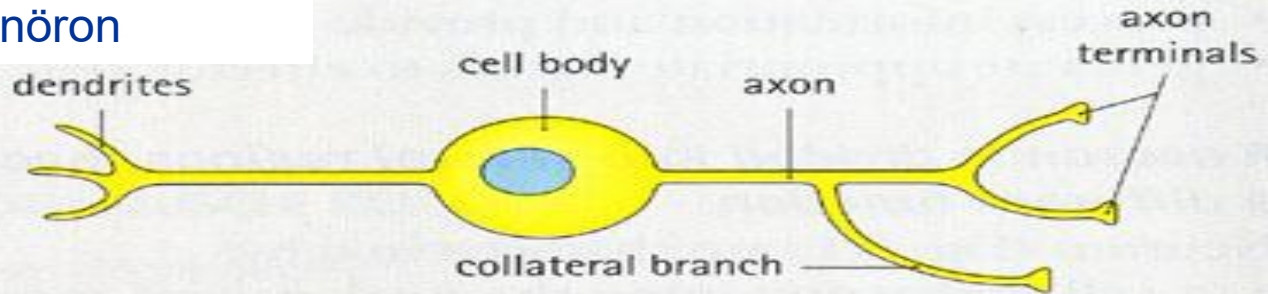
Hücre gövdesi (perikaryon)

Akson

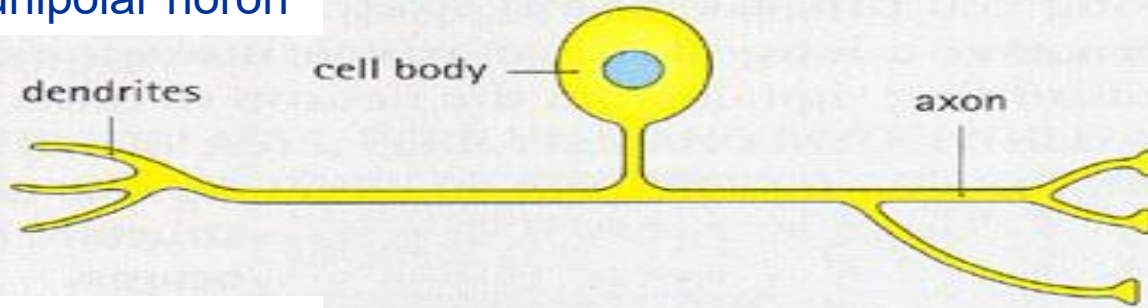


Nöron tipleri

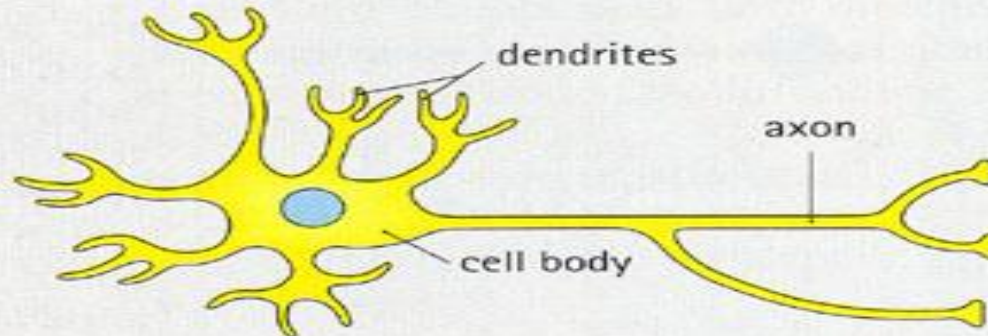
Bipolar nöron

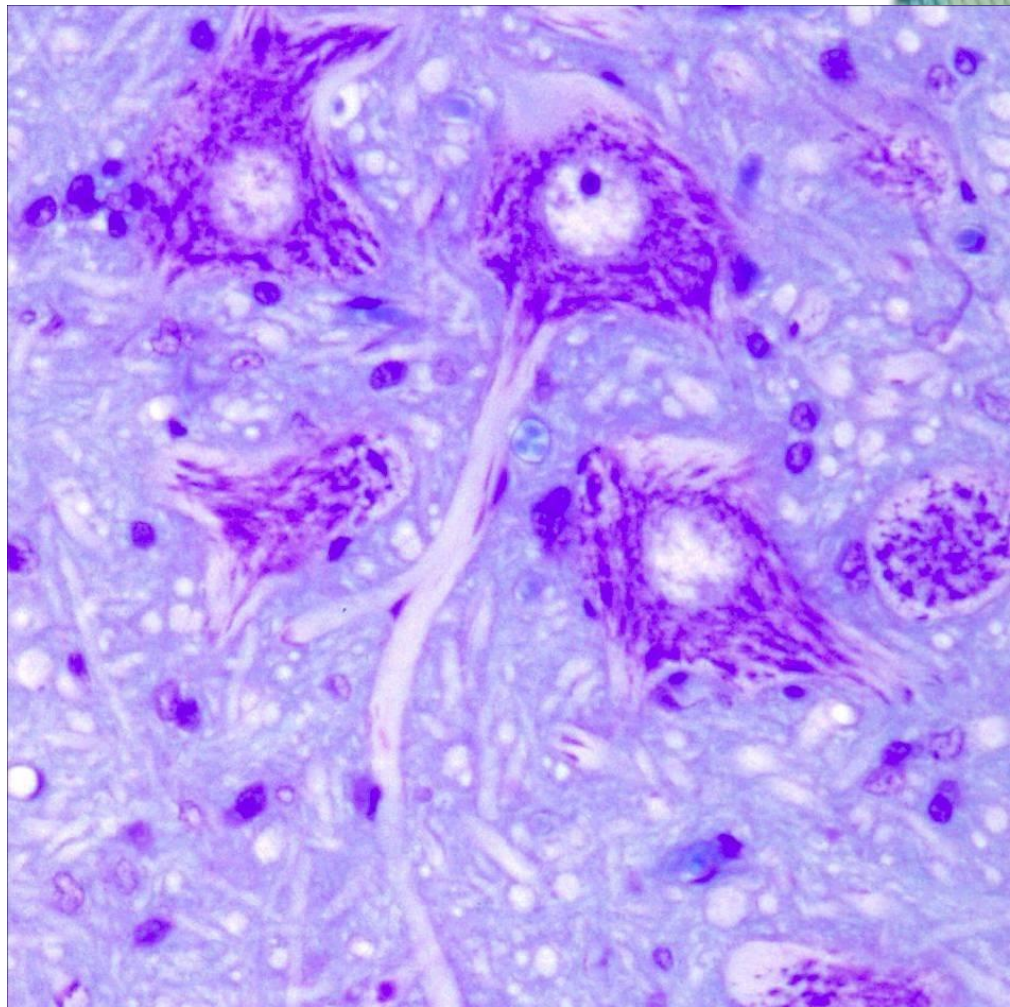
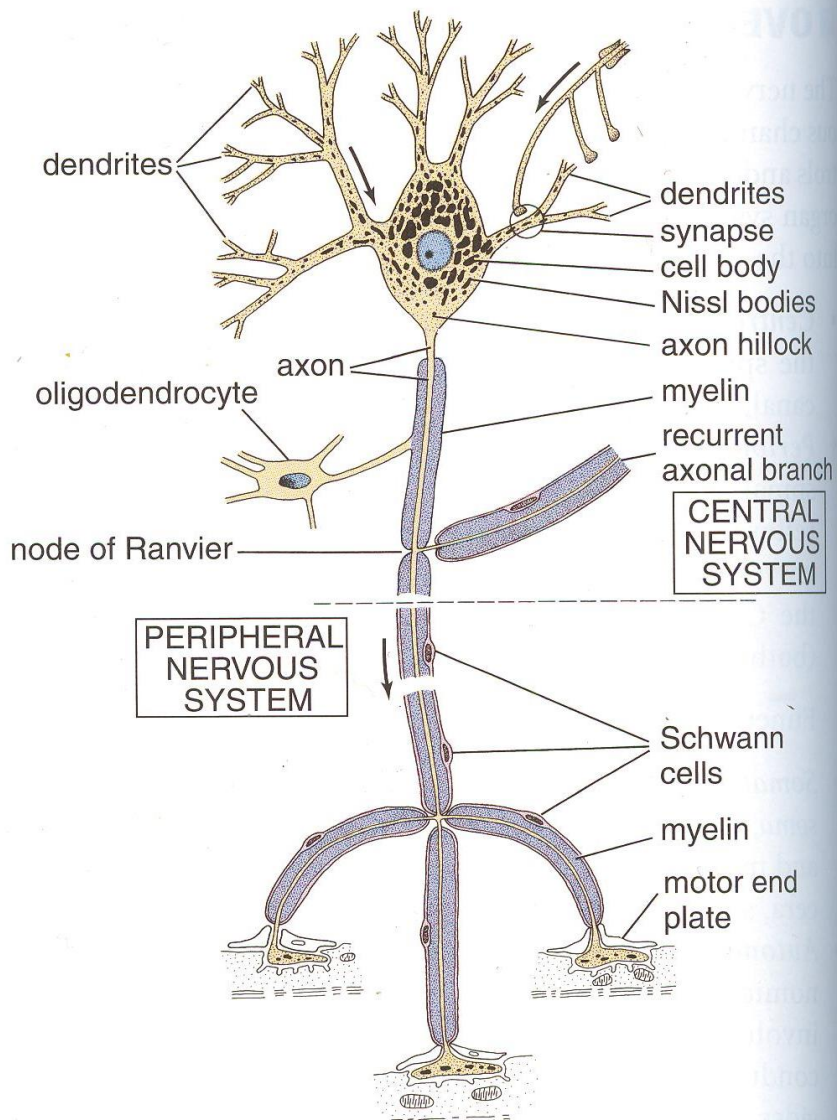


Psödounipolar nöron



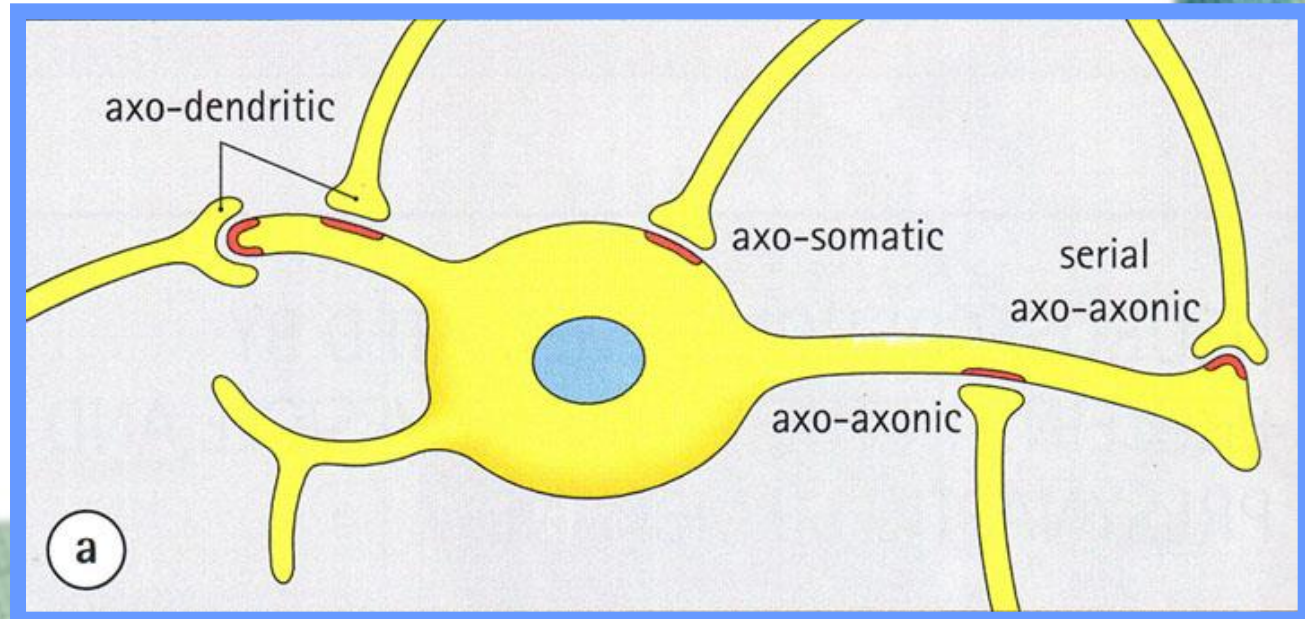
Multipolar nöron





Sinapslar

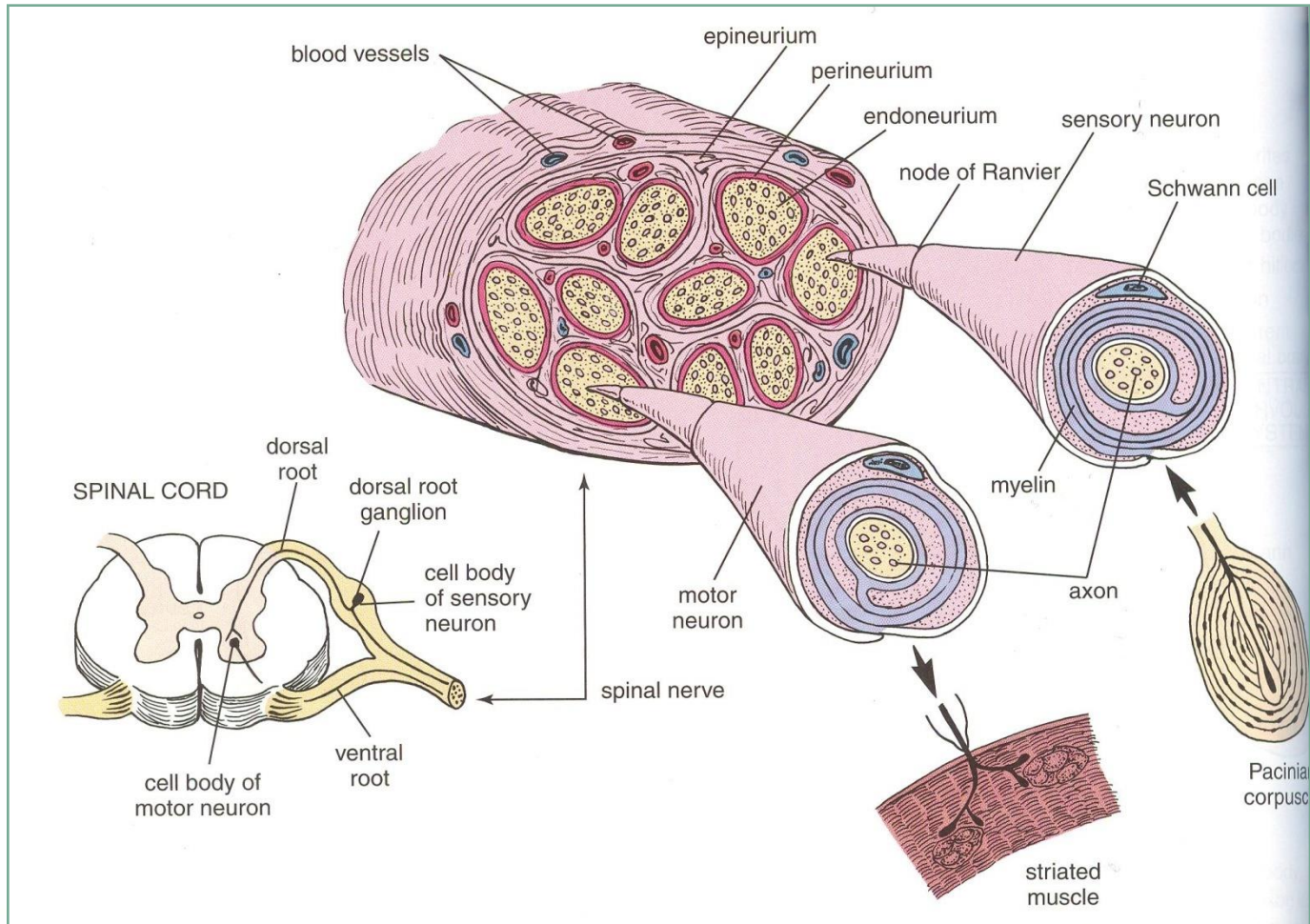
- Sinir impulsunun iletildiđi özelleşmiş yapılardır
 - Akso-dendritik \Rightarrow aksonla dendrit arasında
 - Akso-somatik \Rightarrow aksonla soma arasında
 - Akso-aksonik \Rightarrow iki akson arasında

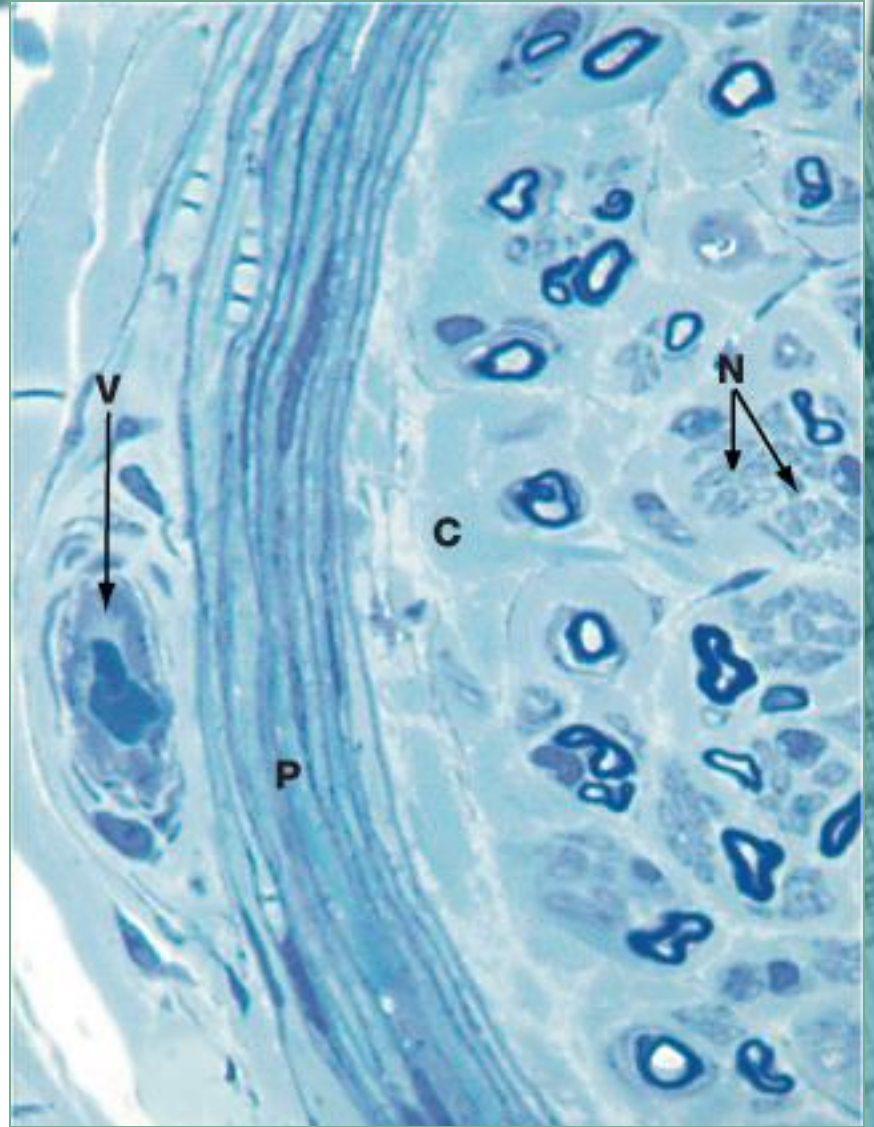
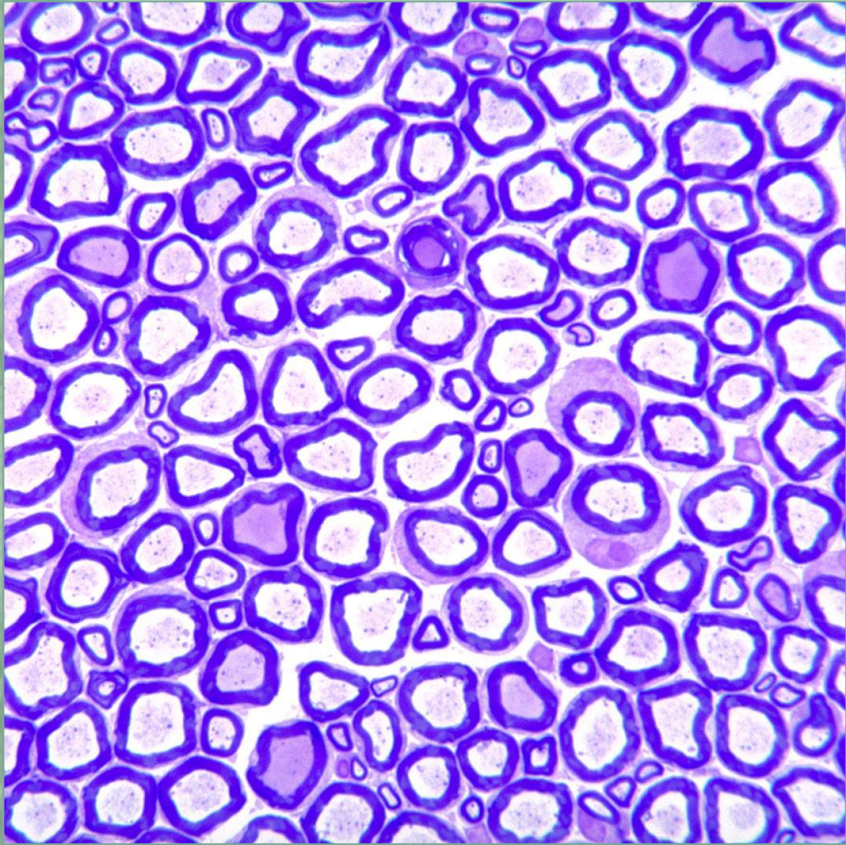


Periferik sinir

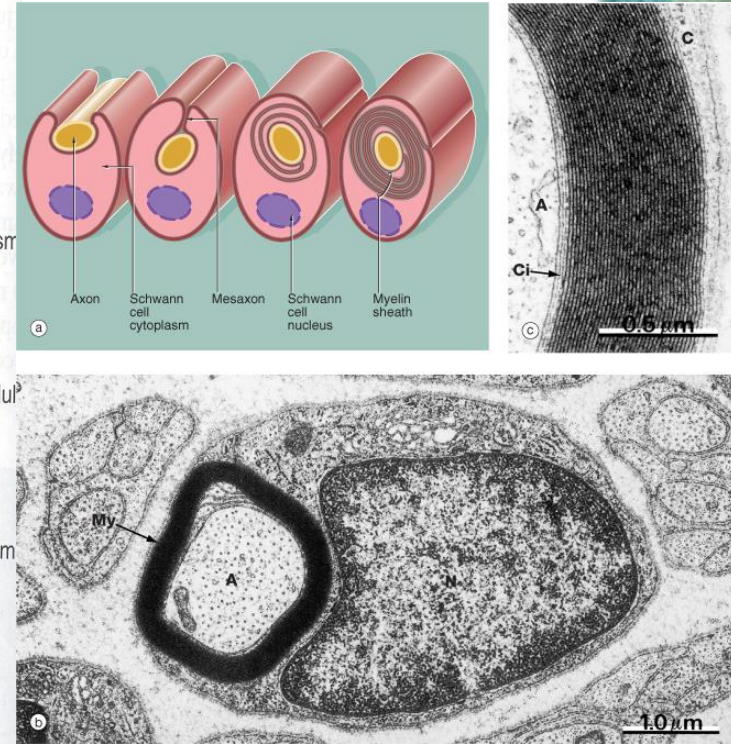
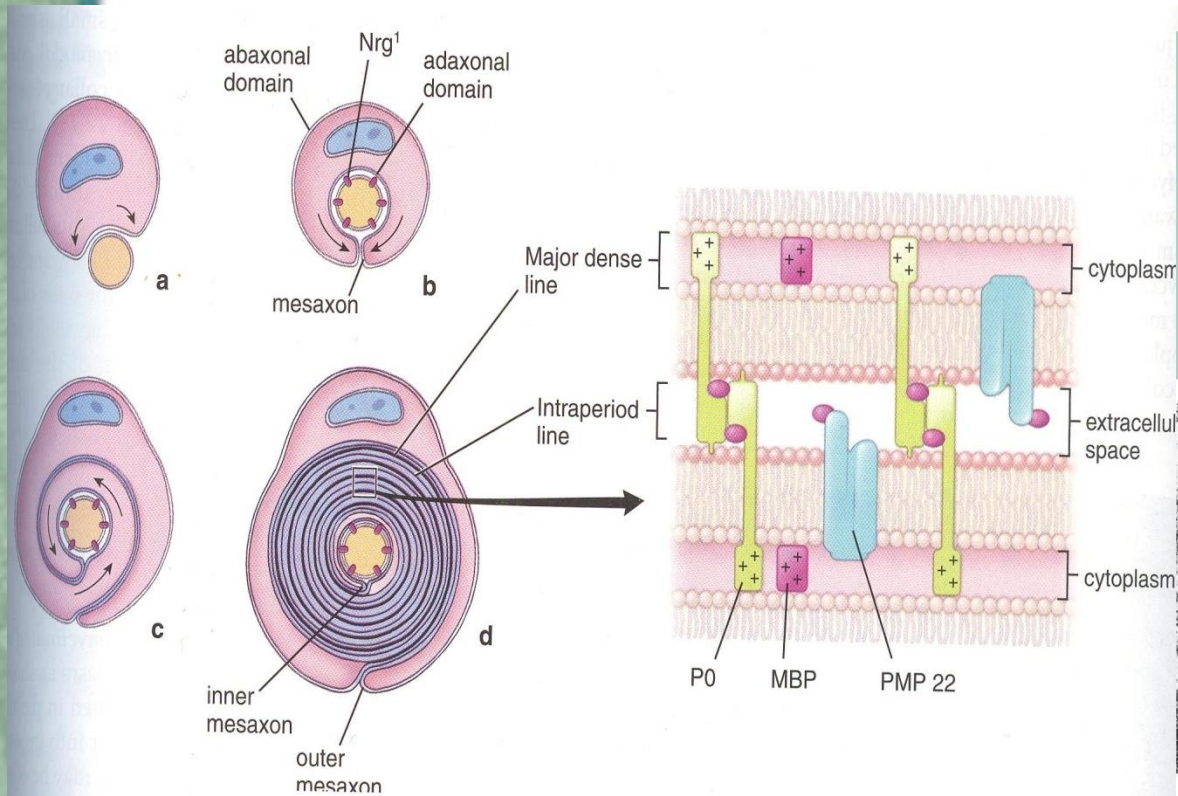
- Bađ dokusu ile evrelenmiř sinir lifleri demetidir
- Duyu ve motor bilgileri tařır
- Hcre gvdeleri MSS veya gangliyonlarda bulunur

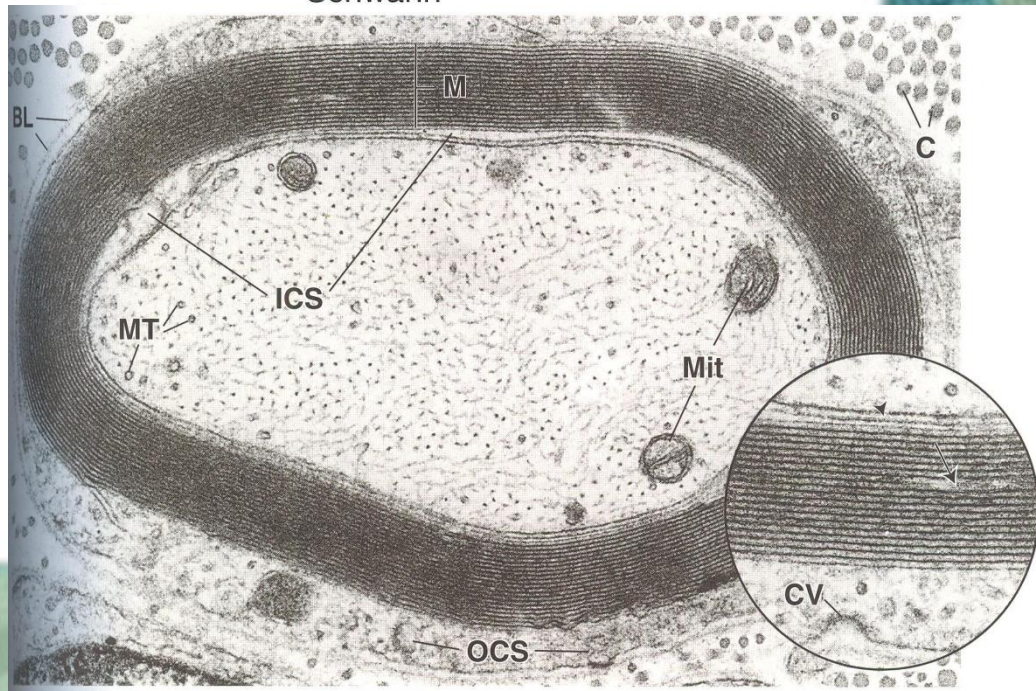
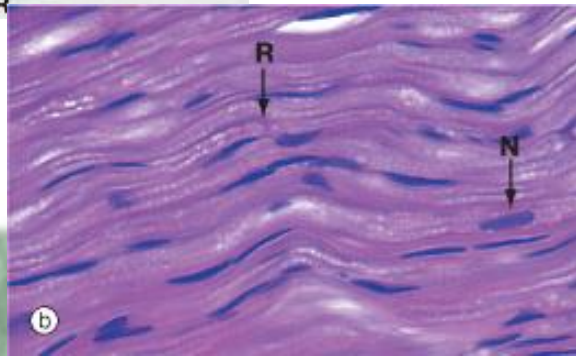
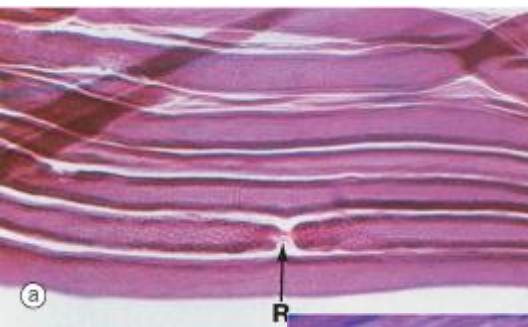
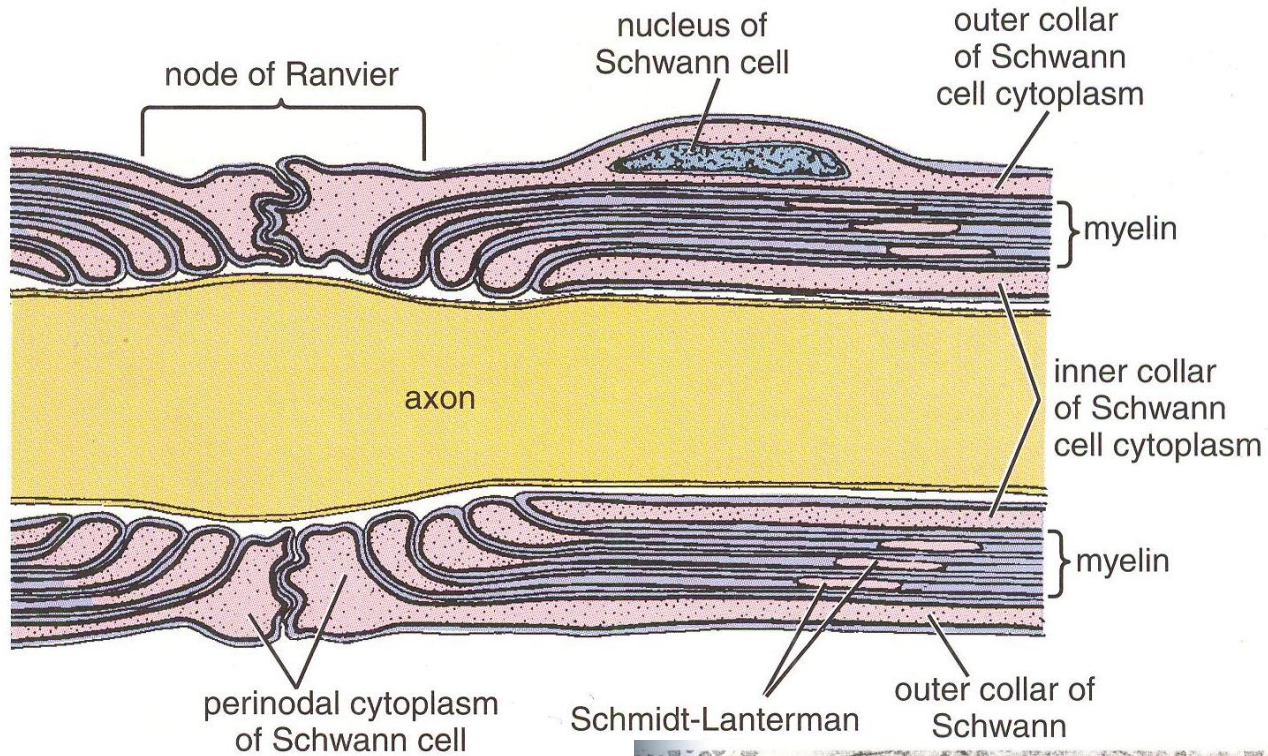
Periferik sinir - Elemanlari



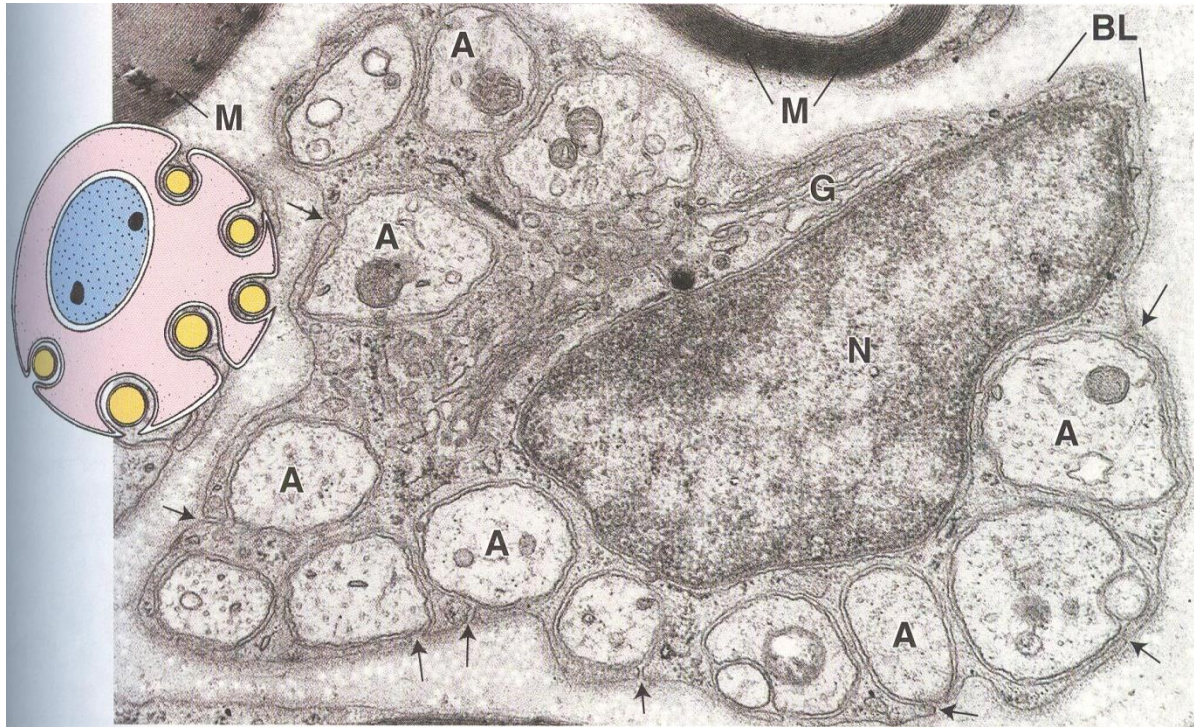


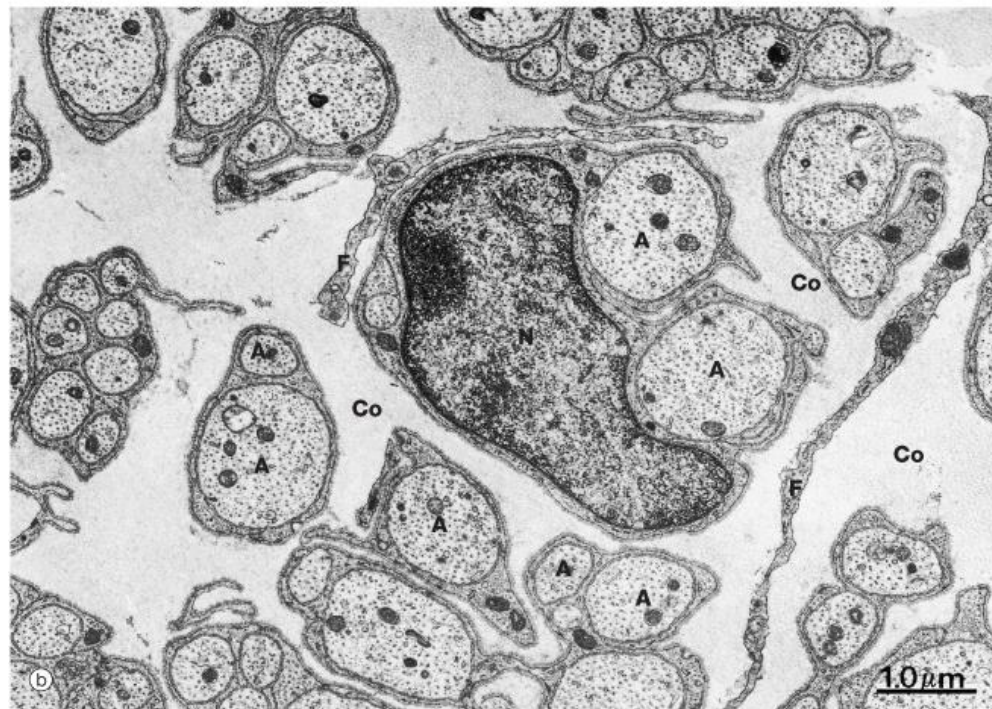
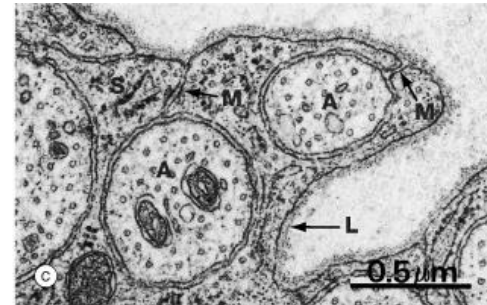
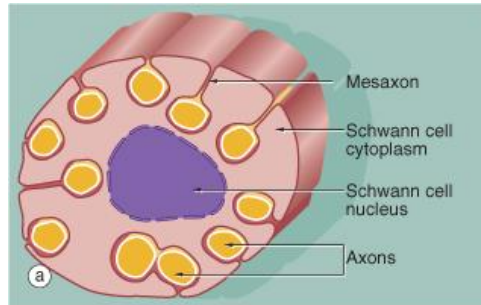
Schwann hücresi ve miyelin kılıf





Schwann hücresi ve miyelinsiz sinir

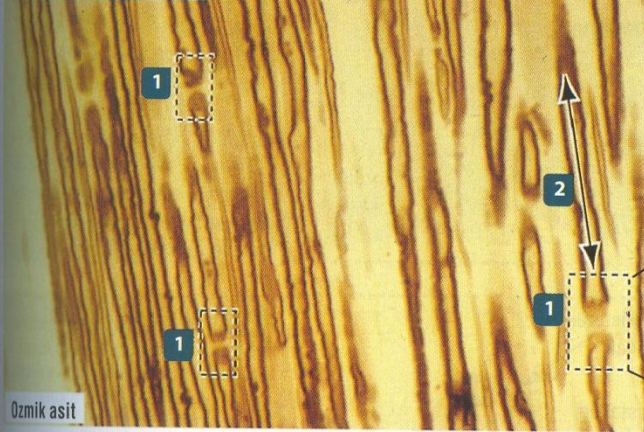




Periferik sinirin yapısı: Ranvier boğumu

Ozmiyum tetroksit ile tespit edilmiş veya hematoksilin-eosin ile boyanmış periferik sinirler

Uzunlamasına kesit

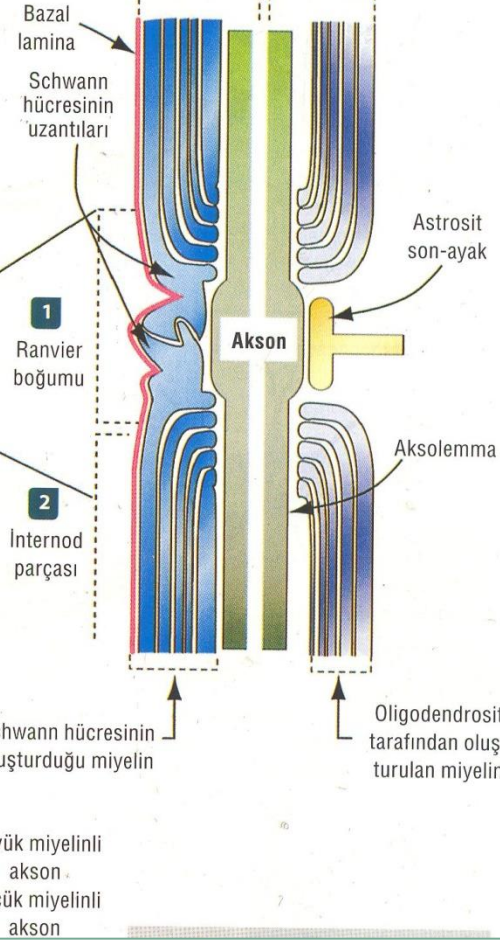


Enine kesit



Periferik sinir sistemi

Merkezi sinir sistemi



Periferik sinir örtüleri

- Epinöryum
- Perinöryum
- Endonöryum

